

**Total  
VRRecall**

LinX Altus



## **Professional Audio Logging and Call Recording Systems**

VoIP : Radio : Analogue : RTP : Consoles : DMR

High Capacity : Ultimate Reliability : Maximum Flexibility



# Total Recall VR LinX Altus

*The reliable voice logging  
solution for mission-critical  
communications*



Total Recall VR **LinX Altus** provides a professional, robust and highly configurable rack mounted voice logging solution for larger capacity, enterprise-critical analogue, VoIP, DMR, RTP and/or radio recording applications.

**LinX Altus** is equally popular with enterprises, governments, public utilities (including Airports and Rail) and military across the globe.

Specifically designed for mission-critical applications, **LinX Altus** offers unprecedented levels of hardware redundancy, reliability, and interface flexibility. When you need the best and most secure call recording system on the market, you need Total Recall VR **LinX Altus**!

- ✓ 72 Simultaneous Analogue Channels;
- ✓ 30 Simultaneous VoIP/RTP/DMR Channels;
- ✓ 72 Simultaneous Analogue Channels PLUS an additional 30 VoIP/RTP/DMR Channels (in Hybrid Recording Mode).
- ✓ Up to 600,000 Hours On-board AV-GP 1TB SATA HDD Storage.
- ✓ Multiple hard drive options (AV-GP, Higher-Capacity and/or SSD HDD) for special installations or vehicle-mounted applications.
- ✓ Optional RAID-1 Hard Drive Configuration.
- ✓ Optional Dual Hot-Swap PSU.
- ✓ 220 (H) x 480 (W) x 230 (D) mm (5RU).
- ✓ Archive to CD/DVD/Blu-ray, USB devices, and Network Storage (NAS).
- ✓ Built-in Colour LCD Control Panel with keypad.
- ✓ Remote Management and Record on Demand (PCI DSS compliant) PC applications included.
- ✓ Seamless integration with major telephony, radio and console systems, including Tait, Hytera and Omnitronics.
- ✓ Used in some of the most demanding environments worldwide: Military, Vehicle-Mounted, Air Traffic Control recording (ATC), major Emergency Services (E-911) and more...



CCNC Solutions

1 Peter Parade Old Toongabbie, NSW 2146, AUSTRALIA

[www.ccncsolutions.com.au](http://www.ccncsolutions.com.au) | [totalrecall@ccncsolutions.com.au](mailto:totalrecall@ccncsolutions.com.au) | (+61) 0 412 038 671 |



## Total Recall VR - The **Total** Solution to your Voice Logging Requirements

### **Professional, Flexible, Robust Voice Logging for Phone and Radio**

In an increasingly security conscious, litigious and results-driven world, call recording and monitoring is vital to meeting your safety, duty of care and management needs. Total Recall VR **LinX Altus** is the fully featured, dedicated and professional voice logging system to match your requirements. Uncompromisingly reliable, and with flexible hybrid recording options, Total Recall VR **LinX Altus** is perfect for recording, archiving, searching and replaying your critical phone, radio and console communications.

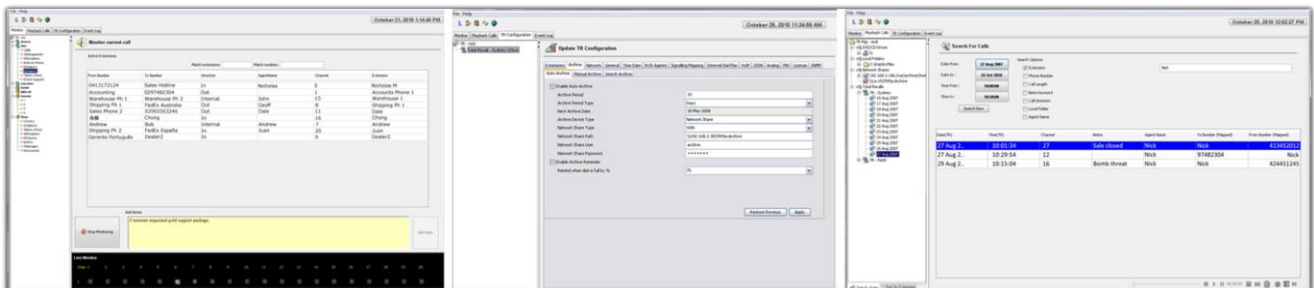
### **Fast & Convenient Access with Simple GUI and Navigation**

Live monitor, search and replay calls from the built in control panel on **LinX Altus**, featuring simple navigation keys and a big, bright 130 x 97mm TFT LCD display. Your solution can be managed from the control panel via three menus (Logging, Search and Options) and four simple navigation keys. Call replay control keys (play/pause, fast forward, rewind, and stop) are also included. Alternatively, all unit functions and configuration can be managed via your network and **Remote Manager** - PC software included at no additional cost with your Total Recall VR **LinX Altus** system.

### **Reliable and Fault Tolerant, Multiple Long-Term Archive Options**

Total Recall VR **LinX Altus** is custom engineered for voice logging, offering superior reliability compared to PC based systems. We combine numerous on-board hard drive storage options (including AV-GP, RAID-1, High-Capacity or SSD storage), together with the security, speed and reliability of an enterprise-grade UNIX operating system. Store up to 600,000 hours of call recordings on board (with HQVQ/SPEEX compression), and archive calls automatically or on-demand to inexpensive CD, DVD or Blu-ray media, network-attached storage or USB device.

### **Convenient and Powerful Windows PC Apps**



Remote Manager PC software is included free with your system, to provide basic configuration, live monitoring, search and replay functions from the convenience of your Windows PC, via a TCP/IP network. You can also copy calls from your Total Recall VR system or archive discs to your computer, email calls in MP3, WAV, or secure TRC format, and add searchable notes to calls in real time.

Optional advanced PC apps are also available, providing highly configurable search & replay on TRVR systems and archives, multi-track waveform replay of calls, centralised continuous network archiving from one or multiple TRVR systems and/or simplified archive integrity checks & repair. Contact us (or your local TRVR reseller) for more information!

### **Record Everything – Combine Analogue and VoIP Telephones, Radios, RTP Streams, Intercoms and More...**

**LinX Altus** can record up to 72 simultaneous analogue channels from any line-level audio source - telephones, 2-way radio, intercoms etc. Inputs are standard modular audio jacks that are compatible with a wide range of easily available accessories. Additionally, record up to 30 VoIP channels, RTP streams, DMR channels etc. in any combination.

Continuously live monitor by extension, or search and replay completed calls with ease. All functions are available via the built-in control panel, or from the comfort of your PC. Configurable Record-on-Demand functionality (PCI DSS compliant) gives users the option to record or discard current calls, or even to partially record calls if required. Record all calls, or between user-defined times.

Proven in thousands of installations worldwide, Total Recall VR is the professional and cost effective choice in voice logging systems and services, for all enterprise, government and military requirements.

# LinX Altus Specifications:

## Analogue

Hi-Z FXS/FXO 2-wire interface.  
Caller ID detection: FSKR, DTMF.  
Digit detection: DTMF.

## VoIP

RJ45 (8P8C) connector.

SIP over UDP (RFC3261,  
RFC2976, RFC2833).  
SDP (RFC3264).  
H.323 over UDP or TCP (ITU-T  
H.323, ITU-T H.225, ITU-T  
H.245).  
RTP (RFC 3550).  
Tait VRP  
Hytera DMR  
Omnitronics IP

Encoding method: G.711 (A or  $\mu$ -  
law), 8000Hz, 64Kbps, mono.

## Voice Encoding

HQVQ, 8000Hz, 7.9Kbps, mono  
SPEEX Q8, 8000Hz, 15Kbps,  
mono.  
MPEG Audio Layer-3 (MP3),  
8000Hz, 24Kbps, mono.  
G.711 A-law, 8000Hz, 64Kbps,  
mono.  
G.711 U-law, 8000Hz, 64Kbps,  
mono.

## Audio File Formats

Total Recall VR (.trc).  
Microsoft Wave (.wav).  
MPEG Audio Layer-3 (.mp3).

## Maximum Channel Capacity

*Single-Interface Mode:* 72 analogue  
channels, or 30 VoIP/RTP Channels.

*Hybrid mode:* 72 analogue channels  
PLUS 30 simultaneous VoIP/RTP  
recording channels, in any  
combination.

## Analogue Recording Trigger

Off-hook – 6 voltage levels: 30V,  
25V, 20V, 15V, 10V and 5V.  
VOX – 6 signal levels: -20dB, -24dB,  
-28dB, -32dB, -36dB and -40dB.

## VoIP Recording Trigger

SIP session.  
H.245 call.  
Unicast RTP Stream.  
Multicast RTP Stream.

## Recording PIP Tone

1.4KHz. Analogue channels only.  
Channel & level selectable.

## Operating System

Linux CentOS 6.4.

## On-board Storage

AV-GP SATA Hard Drive: 1 Million  
Hours MTBF, up to 600,000 hours of  
call storage.

## On-board Archive Device

CD/DVD/Blu-ray Drive (Supports  
CD-R, DVD+RW and BD-RE media).

## External Archive Device

TCP/IP Network Drive: 250,000  
records per archive session, up to  
storage limit.  
USB Storage Device (USB key, USB  
HDD).

## Network Interface

2 x 100Mbps Ethernet.  
Time Synchronisation via NTP.  
Alarm Interface via SNMP.  
SMDR Interface via TCP/IP.

## Audio Interface

Built in speaker.  
Line-out jack – 3.5mm.  
Headphone jack – 3.5mm.

## Construction

Zinc passivated steel with powder  
coated face.

## Display

130 x 97mm Colour TFT backlit LCD  
display.

## Dimensions & Weight

220H(5U) x 480W x 230D mm  
/10Kg.

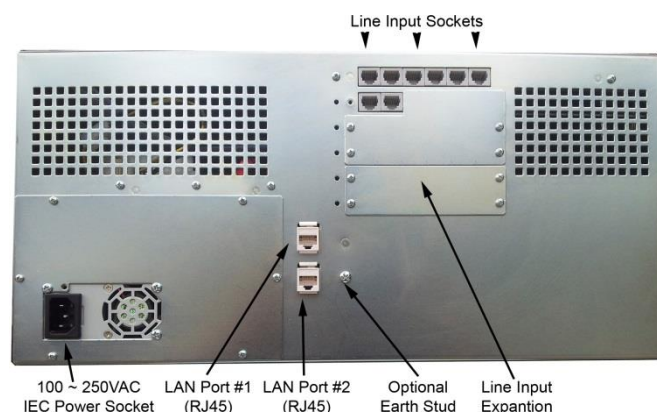
## Power Supply

90 – 260 VAC, 50 – 75Hz.  
Optional Hot-Swap Auto Sensing PSU  
400W + 400W.

**All Specifications Subject To  
Change Without Notice**



**Total Recall VR LinX Altus: Control Panel**



**Total Recall LinX Altus: Rear View**